

Concluding remarks

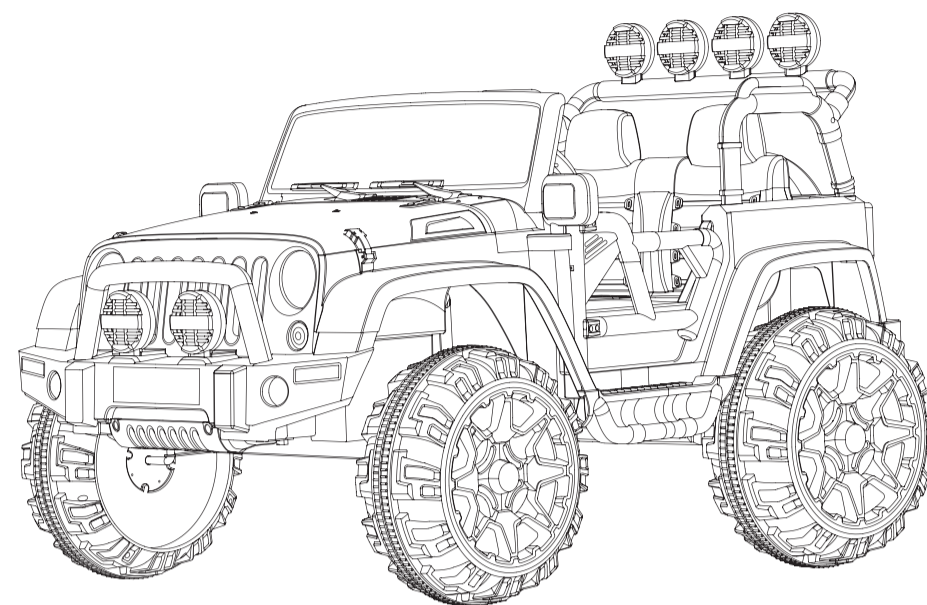
- Operative norm:
- EN 71-1 EN 71-2 EN 71-3 EN 62115
 - ASTM F963 CPSIA
 - GB 6675.1-2014 GB 6675.2-2014 GB 6675.3-2014
 - GB 6675.4-2014 GB 19865-2005

The illustration adopted in th explanation is used for explaining product's operating measures and configuration. When there is little difference between assembly diagram and practicality, according to the real object please.

Improvement in vehicle will be added to the manual of new edition, there is no extra information. The company reserve the right to change the manual of its models at any time.

At least, thank you for purchasing our products. We will provide you comprehensive services wholeheartedly. May your family live a happy life and your baby grow up happily.

GUIDE BOOK



The car must assembled and inspected by adults. Products features may vary from the pictures in book, configuration based on your order!

CHOKING HAZARD--Small parts, it is not for children under 3 years!

- Please read the operating instuctions carefully before using.

Disposal of Battery



- Do not throw into a fire. The battery may explode or leak.
- Your sealed lead-acid battery must be recycled or disposed of an environmentally sound manner, or will pollute environment.
- Return an exhausted battery to your local approved lead-acid battery recycle.

Special Explanation



- Please check the guide book carefully before using and keep it properly for further checking.
- The vehicle must have been installed and check the confirmation by adults before use.
- Suitable age is 37-95 months, not suitable for children under 3 years old or above 8 years old.
- Forbidden overage and overload children to play it. Maximum capacity is 40KG.
- It is not a vehicle. Please do not play it on the road. Adults should supervise.
- Forbidden to play it in the public street, road, slope, pool or stair and other dangerous areas.
- Do not use this product in high-voltage line, transfmr station, gas station, hospital.
- Charging should be done by adults. Away from inflammable or explosive objects. Do not let children play charger, it is not a toy.
- Do not wash the vehicle with water, use a soft damp cloth to clean.
- Must use this vehicle with shoes, with safe-belt.
- In order to prevent a child from suffocation, keep plastic bags away from children.
- Only adult can operate the remote control, and must keep distance within 10m for remote control and car. In the same place, must not have two or two above cars using remote control.

Important Safety Instructions

Important Safety Instructions
WARNING ! CAUTION

- Assembly/Used
- Product requires adult assembly.** Parts, sharp edges and sharp points in the vehicle's unassembled state. Children should not handle parts or help in assembly of the vehicle.
 - Small assembling parts have choking danger, forbidden to children's play.
 - Always properly handled the protective material and poly bags before assembly. Forbidden to children's play and have suffocation danger!
 - Suitable for age 37-95 months; Maximum user weight is 40 Kgs.
 - This product is forbidden to children under 3 years to avoid damage.
 - This product is not vehicle. Direct Adult Supervision Required.** Never leave children alone. Always keep child in view when he is in vehicle. Teach safety rules to your child before allowing operation of this vehicle
 - These rules should also be reviewed with other playmates who want to drive this vehicle. Make sure children know and follow these rules for safe driving and riding.
 - Always wear shoes.
 - Always sit on the seat with safety belt.
 - Always wear a helmet when riding. Only one rider at a time.
 - Keep children within safe riding areas, these areas must be: Do not play in traffic or play near vehicles.
 - Away from sloped/inclined surfaces/swimming pools or other wet place.
 - Charge
 - Away from other dangerous places.
 - Only outdoors. Generally find ground/playground and other hard surfaces.
 - Play in daytime, avoiding in rainy or dark day, or maybe occur danger.
 - Before using, adult should check the main components whether the car whether in good condition:**
 - Battery plug should been plugged in, power is switched; battery/charge/wire/plug/car body and other parts whether is damage, whether screw loose; whether have other damage problems. To avoid using damaged car until it repaired.
 - The toy should be used with caution since skill is required to avoid falls or collisions causing injury to the user or third parties.
 - To avoid damaging the motors and gears, stop the vehicle before shifting from forward to backward switch.
 - Please turn forward/stop/backward switch to stop in the state of no-driving. And turn off power switch. (notice: this switch only control the parts of drive.)
 - Do not let any child touch the wheels or near them when the car is moving.
 - Do not low anything behind the vehicle or overload it, do not exceed the maximum weight capacity of 40 kgs.

Contents

- Brief Instruction and Model ----- 01
- Safety Instruction ----- 02
- Packing List ----- 04
- Parts Diagram ----- 05
- Assembly Steps ----- 06
- How to Operate Your Vehicle ----- 10
- Charging Your Vehicle ----- 11
- Caring for Your Vehicle ----- 11
- Problems and Solution Guide ----- 11
- Disposal of Battery ----- 13
- Special Explanation ----- 13
- Remote Control Operation Explanation ----- 14

Brief Instruction And Model

Thank you for choosing our vehicle. Each vehicle pattern is designed upon a unique mold: such as the realistically imitated vehicle and cute series, which bring different fun and feeling for your children.

We wish our vehicle to accompany your children for a happy childhood and your family will be filled with joy and happiness.

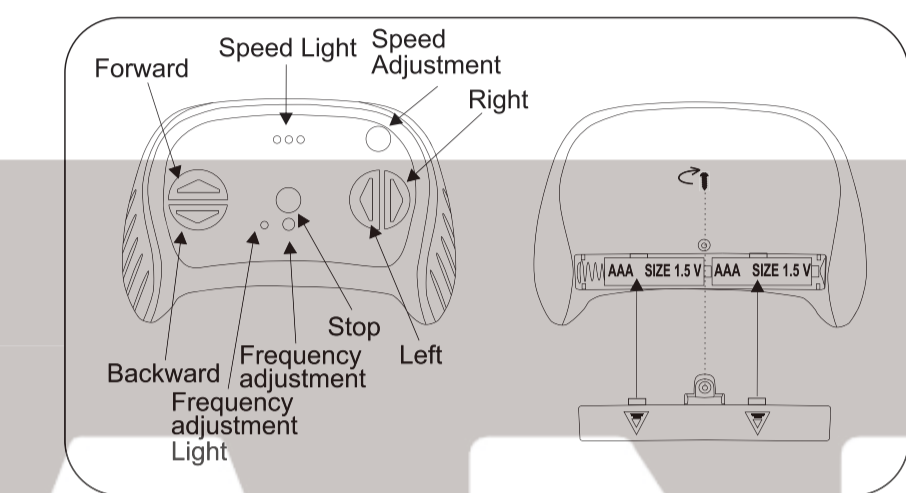
| | | | |
|---------------|---|----------------------|-----------------------|
| Suitable Age | 37-95Months | Load Capacity | ≤40kg |
| Driving Motor | RS 550/12V11000 round | Turning Motor | RS 380/12V10000 round |
| Speed | 5-7 KMH | Size of Car | 140*91*85 CM |
| Charger | Input: 220V, 50Hz Output: DC12V 1000ma | Battery | 12V/10Ah |
| Power Way | Charging Type | Charging Time | 8-12 Hours |
| Fuse | 15A | Average Battery Life | Approximately 300 |

Remote Control Operation Explanation

Only adults can use remote control, children are not allowed.

Battery assembly: remove the screw from the remote control's battery cover, open the cover, put two AAA 1.5V batteries (not included) into it according to the direction of the +, then put the battery cover. (Long time no use, please remove the battery. If replace the batteries, step is the same.)

- How to use the remote control:
- Press frequency adjustment, frequency adjustment light will light, then open power switch again
 - When frequency adjustment light stops flickering, it quenches or lights all the time, it means frequency adjustment is finished.
 - When you need move forward or backward, please press forward/backward button.
 - When you need turn left or right, please press left/right button.
 - When you need to change speed, please press speed adjuster.
 - When you want to stop the car, please press stop button.



- All buttons on the remote control play together will be more fun.
- If the battery is short of energy, the remote control only can control forward, cannot control turning. Please replace new battery.
- Please do not play the car at these areas: highline, transfer substation, gas station, hospital.
- Remote control only can operate by adults. Remote control distance is 10 meters. One area can only play one car, two cars may interference each other.

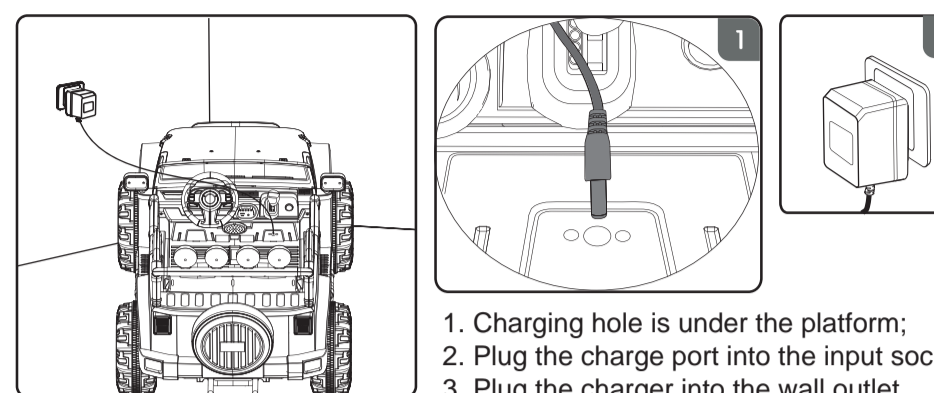
Important Safety Instructions

- Battery/Charger/Alkaline Batteries**
- The battery/ charge/ alkaline batteries are not toy, forbidden for children playing.
 - Non-rechargeable batteries are not to be recharged.
 - Do not mix old and new batteries or batteries of different types: alkaline, standard (carbon-zinc) or rechargeable (nickel-cadmium).
 - Battery charging must be done by adults only.
 - Remove rechargeable batteries from the vehicle before charging.
 - Insert batteries are correct polarity inside the battery compartment. (Like the picture)
 - Remove exhausted batteries from the product.
 - Remove batteries during long periods of non-use.
 - Never short-circuit the battery terminals.
 - Do not use the battery or charger for any other product. Could cause overheating, fire or explosion.
 - Do not open the battery and the charger
 - Do not charge battery upside down.
 - Always maintain battery dry. Do not let the vehicle contact fresh water or salt water.
 - Charge
 - Charge 4-6 hours before the first time using, but not charge over 10 hours.
 - Only adult can handle or charge the battery. Never allow children to do that. Turn off power switch before charge the battery.
 - Connecting correct polarity when charging.
 - Examine the battery, charger and their connectors for excessive wear or damage each time you charge the battery. If damage or excessive wear is detected, do not use the charge or the battery until you have replaced the worn or damaged parts.
 - When the vehicle's normal speed apparent slow down or after each use, recharge the battery for 8-12 hours, never charge the battery longer than 18 hours.
 - Charge the battery in a dry area ONLY.
 - It is normal that charger and battery are tepid while charging.
 - Charge the battery at least three months one time, even if the vehicle has not been used.
 - In room temperature below 5 degrees centigrade, charging the actual to lengthen 3-5 hours. Below -5 Celsius please do not use this product.

Problems and Solutions Guide

- Cause: Thermal fuse has tripped. The vehicle is equipped with a self-resetting fuse. When the vehicle is overloaded or operated incorrectly, the self-resetting fuse will be cut off for 2 minutes before becoming operational again. The self-resetting fuse is under the seat (refer to the picture)
- Cause: battery connector or wires are loose. Make sure the battery connectors are firmly plugged into each other.
- Cause: battery is dead. Please contact retailer or manufacturer.
- Cause: electric line system is damaged. Please contact retailer or manufacturer.
- Cause: motor is damaged. The motor needs professional repair. Please contact retailer or manufacturer.
- Problem: The battery can not be charged
- Cause: battery connector is loose. Make sure the battery connector is firmly plugged into each other.
- Cause: charger is not plugged in. Make sure the charger is plugged into the wall outlet and the wall outlet power is on.
- Cause: power is not working? Is the charger warm while charging? If not, the charger may be broken and please contact retailer or manufacturer.
- Problem: The vehicle does not run very long
- Cause: battery may be undercharged. You may not be charging the battery long enough. After each use or per month charge the battery for 8-12 hours. Do not charge over 18 hours.

Charging Your Vehicle



Caring for Your Vehicle

- Vehicle body is modeled by polypropylene. Solarize or in -15°C use are strictly prohibited. Vehicle should be far away from hot objects, like an oven and heated plastic parts may melt beside.
 - Avoid operating the vehicle in wet or snowy conditions, and do not spray the car with a hose. Do not wash the vehicle with soap and water. Water or moisture in the motors or electrical switches can cause them to corrode and can cause switch or motor failure.
 - Avoid operating the vehicle on sand, loose dirt or gravel. Sand, loose dirt or gravel in the motors or electrical switches can cause them to jam, and could cause switch or motor failure.
 - The vehicle can be wiped down with a soft, dry cloth for a shiny finish, you can wipe plastic parts with a non-wax furniture polish applied to a soft-cloth. Do not use automotive wax. Do not use soap or water or spray the vehicle with a hose.
 - Do not modify the electric system. When the fault appears and they must be maintained by professional. Alterations could cause a fire resulting in serious injury and can also ruin the electrical system.
 - Use for about half month, check the wheels turning agilely or not, motor work is normal or not. Using infuse tube to lubricate moving parts.
- Problem: The vehicle does not run
- Cause: The battery may low on power. After each use and once a month minimum, charge the battery for 8-12hrs. Do not charge over 18 hour.

Assembly Steps

- Rear Wing Assembly**
 - Putting the rear spoiler connecting set on the rear wing
 - Pressing the rear wing into the right place on the car until hearing the "crack"
 - Then using screw to tighten windshield and car body.
- Spare Wheel Assembly**
 - Pressing the spare wheel into the right place on the car until hearing the "crack"

Packing List

Please identify all parts before assembly and save all packaging materials until assembly is complete.

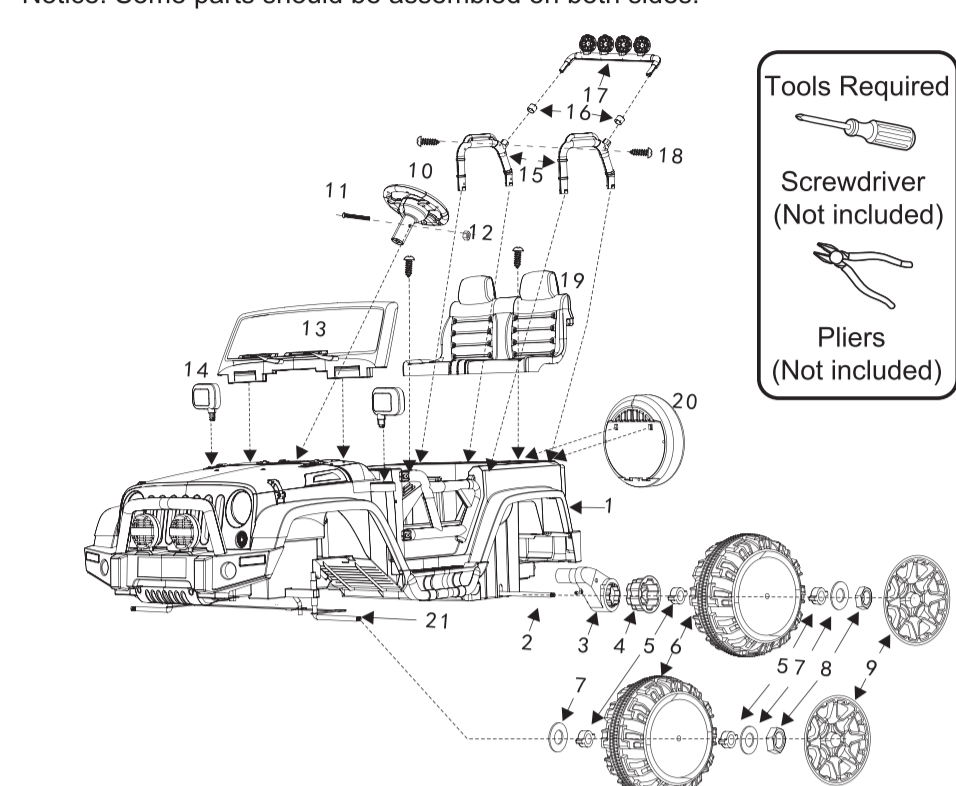
| | | |
|-------------------|----------------------|------------------------|
| 1 Main Body | 2 Windshield | 3 Charger |
| 4 Steering Wheel | 5 Seat | 6 Wheel-Wheel Cap |
| 7 Rearview Mirror | 8 Guide Book | 9 Remote Control |
| 10 Driving Motor | 11 Accessory Package | 12 Rear Spoiler Holder |
| 13 Spare Wheel | 14 Rear Wing | 15 |

Assembly Steps

- Notice: The car should be assembled by adults, assure it is ok before use.
- Rear Wheel Assembly**
 - Assemble spare parts to the front axle according to the picture on the left
 - Two motors assemble: assembling the side mark "L" of the rear axle Motor--Wheel Connector--Bush--Washer--Wheel--Bush--Washer--Screw--Wheel Cap; (two sides assemble in the same way)
 - Front Wheel Assembly**
 - Assemble spare parts to the front axle according to the picture on the left
 - Assemble the front axle Washer--Bush--Wheel--Bush--Washer--Screw--Wheel Cap (two sides assemble in the same way)
 - Steering Wheel Assembly**
 - Screwing off machine screw on the steering wheel.
 - Then connecting the music connector on the steering wheel and the connector on the car.
 - Inserting steering wheel into direction lever, then using the machine screw to tighten (direction should be right).

Parts Diagram

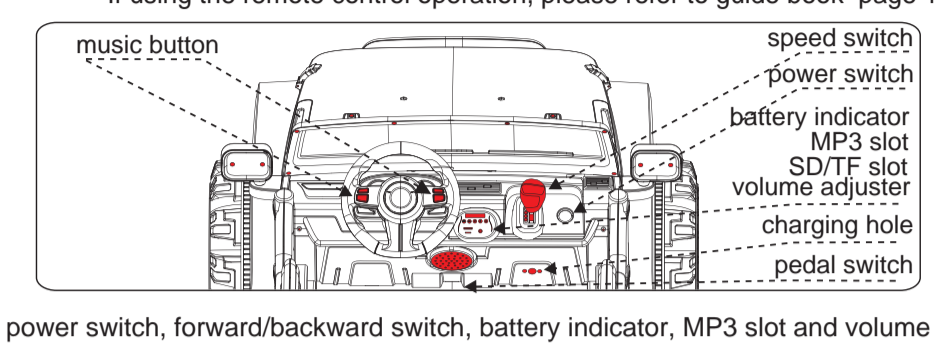
Assembly must be done by adults, it almost takes 30 minutes. Notice: Some parts should be assembled on both sides.



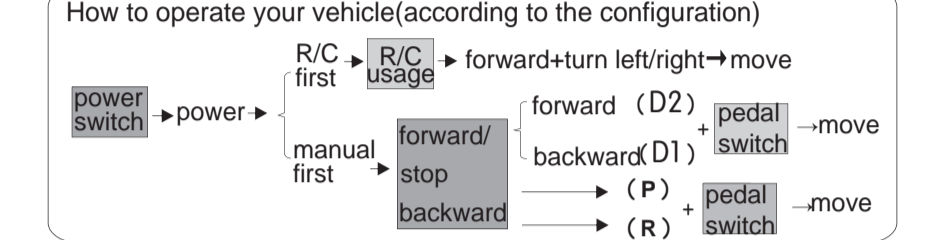
| | |
|-------------------|--------------------------------|
| 1 Main Body | 12 Steering Wheel Nut |
| 2 Rear Axle | 13 Windshield |
| 3 Driving Motor | 14 Rearview Mirror |
| 4 Wheel connector | 15 Rear Spoiler Holder |
| 5 Bushing | 16 Rear Spoiler Connecting Set |
| 6 Wheel | 17 Rear Spoiler |
| 7 Gasket | 18 Screw |
| 8 Rear Axle Screw | 19 Seat |
| 9 Wheel Cap | 20 Spare Wheel |
| 10 Steering Wheel | 21 Front Axle |

How to Operate Your Vehicle

Notice: When you switch forward/backward, please make sure the vehicle has completely stopped, otherwise it will damage the gear box and the motor. If using the remote control operation, please refer to guide book page 14.



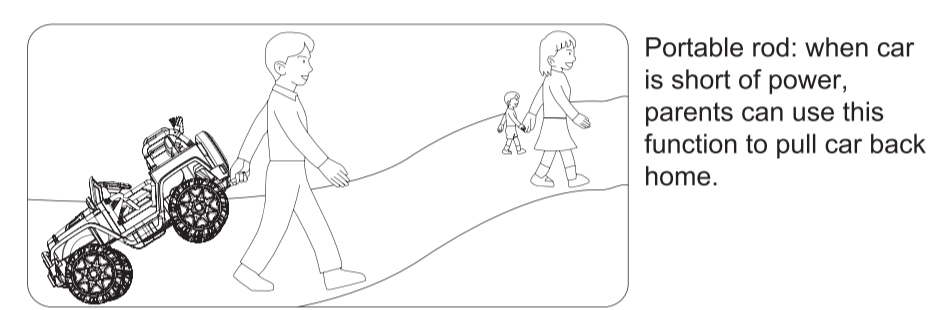
power switch, forward/backward switch, battery indicator, MP3 slot and volume adjuster are on the instrument platform, charging hole is under the platform.



Music: Press the music button, music will be played. If there is no more press, music will stop automatically.

USB integration: 1. USB/MP3(SD/TF) play function
2. battery indicator function (usually max voltage is 13.1V, lower than 12V, please charge)

Do not be close to the ear, improper use can cause hearing damage!



Portable rod: when car is short of power, parents can use this function to pull car back home.

Assembly Steps

- Windshield Assembly**
 - Pressing the windshield into the right place on the car until hearing the "crack".
- Rearview Mirror Assembly**
 - Pressing the wind frame into the right place on the car until hearing the "crack".
- Connecting and Battery Line**
 - Inserting red wire on the car into red column on the battery.
 - Inserting black wire on the car into black column on the battery. (Avoiding inserting into the uncorrect polarity)

Assembly Steps

- Connecting Motor Line**
 - Connecting the car connector and the motor connector
- Seat Assembly**
 - Remove the screw from the car for using (screw maybe in the accessory package)
 - Pressing the seat into the right place according to picture-8-1
 - Then using the screw to tighten the car and the seat.
- Rear Spoiler Holder Assembly**
 - Pressing the rear spoiler holder into the right place on the car until hearing the "crack".